



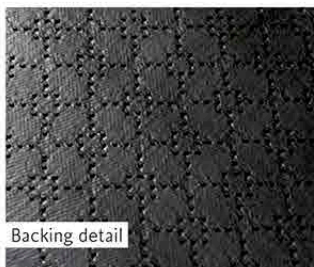
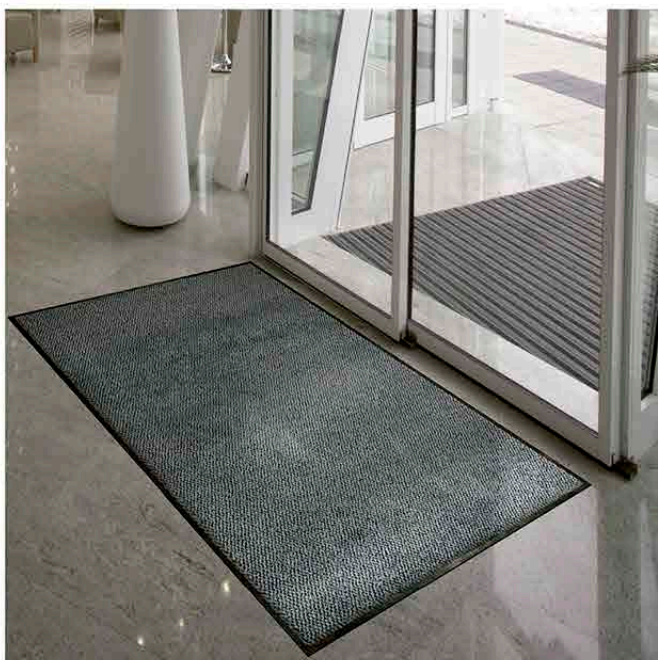
Corporación

RUBERT Plast[®]
de Centroamérica
Publicidad
en Tapetes
Rizo y Alfombra

Especificaciones técnicas ENTRANCE DELUXE



Entrance Deluxe Datasheet



Surface detail

Backing detail

Product features:

Extra plush and high pile for extreme dirt and moisture control

- Two colour fibre mat, best for hiding dirty foot prints
- Extremely durable nylon surface in multi colour shades
- Suitable for heavy traffic zones
- Kleeated non-slip backing made from durable nitrile rubber
- Light-resistant and suitable for underfloor heating
- Anti-static

Quality:	Entrance Deluxe
Customs tariff number:	57032098
Product details:	2 year warranty Made in EU 100 % PVC-free Slip-resistant
Classification of the burning behaviour:	EN 13501-1 C _{fl} -s1
Total mat weight:	approx. 2.64 kg/m ²
Overall height:	approx. 13 - 14 mm
Dirt absorption capacity:	1 kg/m ²
Moisture absorption capacity:	4 - 5 l/m ²
Standard sizes:	60 x 85 cm 85 x 120 cm 85 x 150 cm 85 x 300 cm 115 x 175 cm 115 x 240 cm
Standard widths:	85 cm, 115 cm and 150 cm
Standard lengths:	up to 400 cm
Bespoke lengths:	up to 700 cm
Application areas:	Indoor Entrance Lobbies High traffic areas
Pile:	100 % High-Twist Nylon (HTN) Polyamide 6
Colouration:	Solution dyed
Pile height:	approx. 12 - 13 mm
Pile weight without substrate:	0.74 kg/m ²
Pile weight with substrate:	0.84 kg/m ²
Rubber:	100 % Nitrile rubber
Rubber thickness:	1.20 mm
Rubber weight:	1.81 kg/m ²
Rubber border width:	20 mm
Cleaning:	Carpet clean Vacuum clean Steam clean
Tolerance:	Production-related tolerance of +/- 5 %



Silver



Silver Black

